

Explanation of Treatments

Insurance Description

EXTRACTION - Surgical Erupted

IMPLANT - Endosteal

BONE GRAFT - w/ Implant, Tooth, Ridge, or Socket

MEMBRANE - w/ Implant, Tooth, Ridge, or Socket, Resorbable or Non-resorbable per site

EMDOGAIN - Biologic Material

ARESTIN

CTG - Subepithelial or Alloderm

TEMPORARY - Essix Appliance or Flipper

TEMPORARY - OPTIC Crown

FLAP Debridement

Layman's Terms with images

Tooth Removal



Implant Placement which sometimes needs bone graft with Emdogain and membrane (see below).



No crowns are placed on the implants on the day of placement

Particles of dried cow or human bone around an implant, a tooth, or where a tooth is missing to prepare for an implant.



Bone

Collagen or GoreTex membrane to hold bone particles in place. May require metal tacs to hold the membrane in place.



Membrane

Gel to hydrate dried bone graft particles and help keep them in place and encourage healing.



Emdogain

Antibiotic in powder form to kill bacteria.

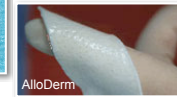


Arestin

Connective Tissue Graft of gum tissue taken from the roof of your mouth, or from a human cadaver source.



Connective Graft



AlloDerm



Before graft, and with palatal gum graft

Essix: A bleaching tray type retainer with a temporary tooth replacement in it to allow for swelling immediately after surgery before transitioning to a Flipper: orthodontic type retainer with a temporary tooth replacement on it.



Essix



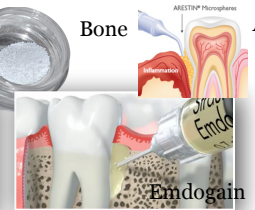
Flipper

Temporary crown made of plastic on an implant to shape tissues before **your dentist makes you the final crown.**



Implant with Temporary

Surgery to reflect the gum to have access to clean the roots better than a deep cleaning. Can use Emdogain and Arestin to improve healing, or bone with membrane to regenerate bone.



Bone

Arestin

Emdogain